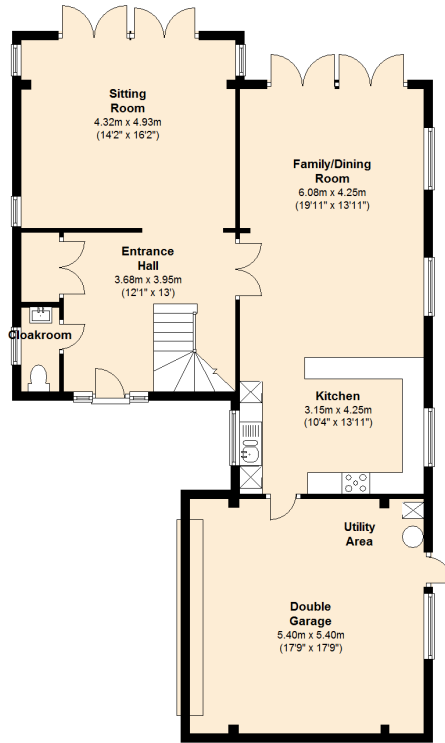


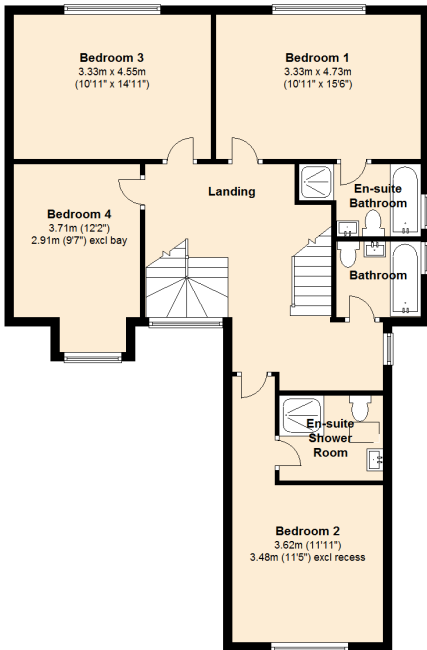
Ground Floor

Approx. 109.9 sq. metres (1182.7 sq. feet)



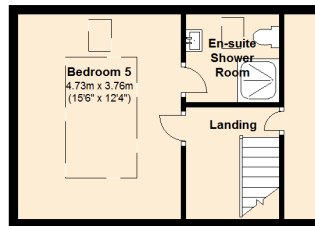
First Floor

Approx. 93.0 sq. metres (1001.2 sq. feet)



Second Floor

Approx. 32.7 sq. metres (351.8 sq. feet)



Total area: approx. 235.6 sq. metres (2535.6 sq. feet)

4 Eastwell Grange, Sandyhurst Lane, Kennington, Ashford